

# Working Together:

## Cloudsource+ and Article Galaxy Scholar

New Paradigm Models  
Analytic Methods  
& New Budgetary  
Possibilities



**Ray Uzwyshyn**, Ph.D. MBA MLIS, [rju13@mstate.edu](mailto:rju13@mstate.edu)  
Associate Dean for Collection Management & Strategy  
Mississippi State University Libraries



**MISSISSIPPI STATE**  
UNIVERSITY™

University Libraries

# MSU Collections Budget Strategy

## New Technology + Synthetic Analysis

MSU libraries are strategizing utilizing Open Access high quality academic e-resources and technology:

### CloudSource+ with Article Galaxy Scholar

to leverage current holdings towards:

**Large Budget Savings,  
New Open Access Possibilities &  
New Methodologies**

for analyzing and purchasing  
Digital e-resources



**ARTICLE GALAXY  
SCHOLAR**



**MISSISSIPPI STATE**  
UNIVERSITY™

University Libraries

# E-Resources Paradigm Shift in Light of Diminishing Budgets and Rise of Open Access Resources/Open Educational Resources

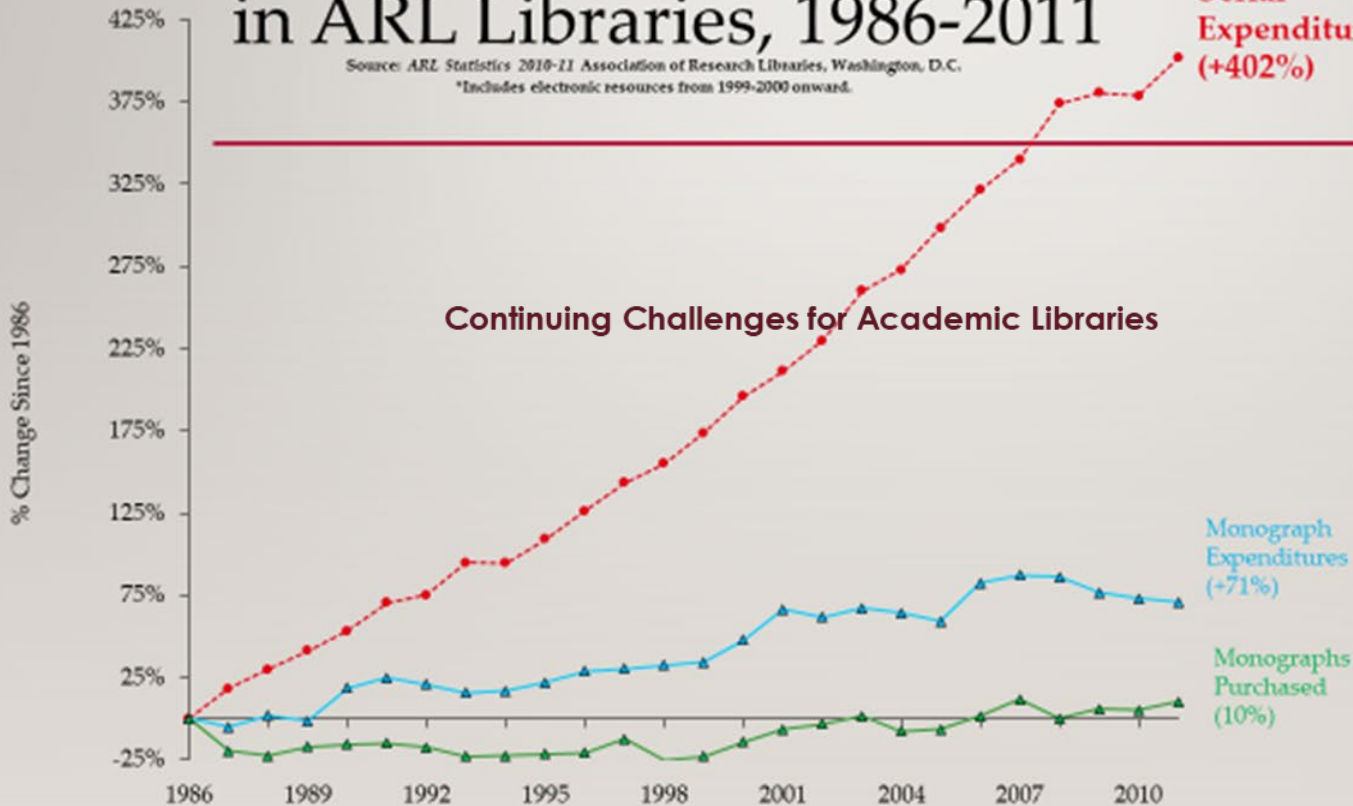
## Monograph and Serial Costs in ARL Libraries, 1986-2011

Source: ARL Statistics 2010-11 Association of Research Libraries, Washington, D.C.  
\*Includes electronic resources from 1999-2000 onward.

+600% (2020)

+521% (2015)

Serial Expenditures (+402%)



Continuing Challenges for Academic Libraries

Monograph Expenditures (+71%)

Monographs Purchased (10%)



# Cloud Source Plus Aggregates Open Access Scholarly Books and Journals

There are over 60 million open access (OA) refereed scholarly journal articles and academic scholarly books now available on the open web.

**Freely available open access material accounts for more than half** of all released scholarly academic journal articles every year globally.

This trend has **been accelerating** and is expected to continue.

**Cloud Source+** Aggregates this open access material.

MSU libraries are leveraging these trends with CloudSource+ and Article Galaxy Scholar towards our budget and new open access possibilities



**MISSISSIPPI STATE**  
UNIVERSITY™

# Cost / Benefit Strategy



Aggregates Open Access Content from High Quality Publishers



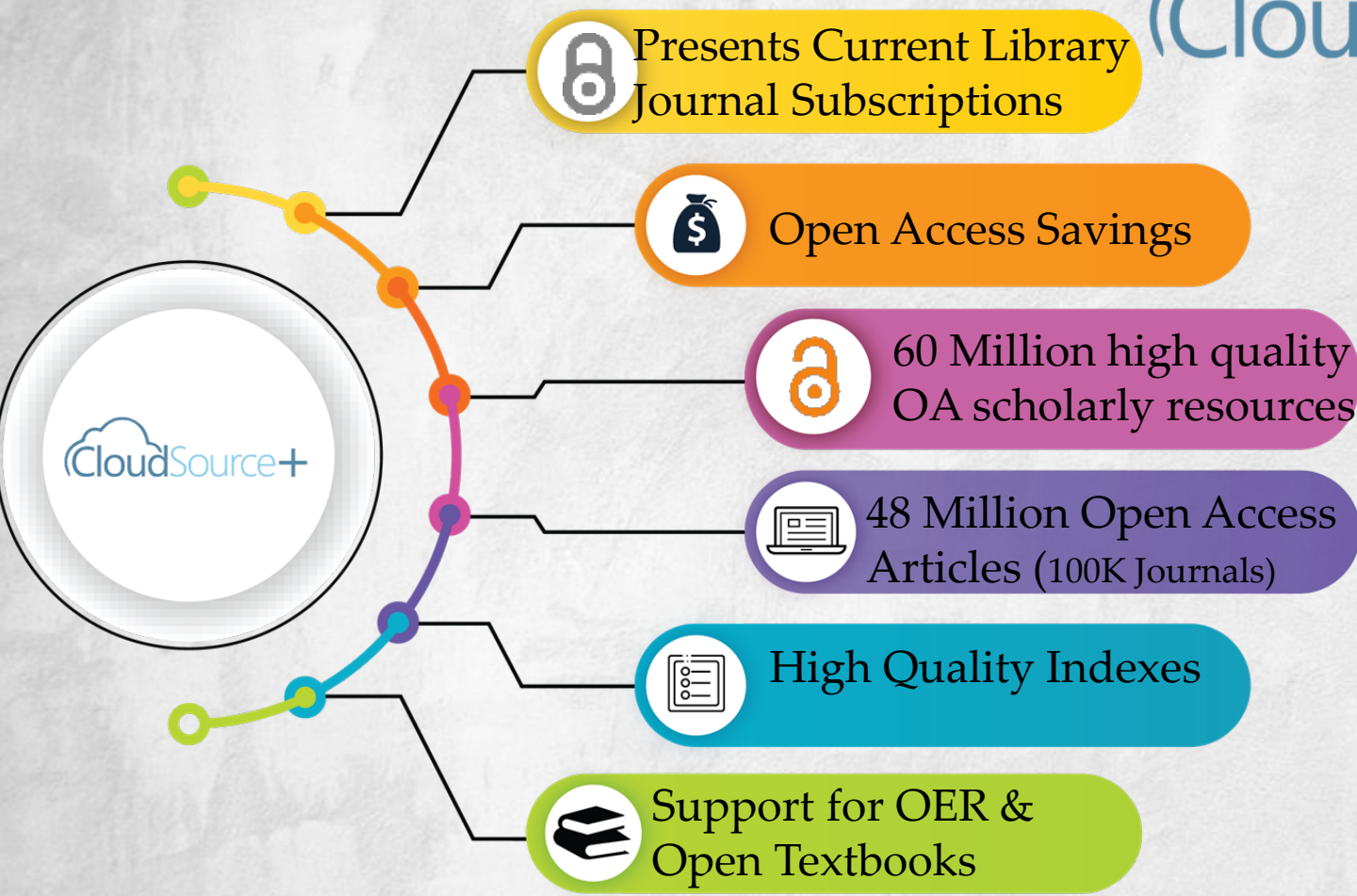
**ARTICLE GALAXY  
SCHOLAR**

Allows purchase of focused Journal/Articles not Available in Present Collections/OA



**MISSISSIPPI STATE**  
UNIVERSITY™

University Libraries



# Budgetary Strategy

# Article Galaxy Scholar

- Provides Document Delivery/On-demand Articles
- Replaces Dropped and/or Needed Journal subscriptions
- Fills a gap for focused resources for research
- Allows further access to 30,000 journals from leading European and North American publishers



# Article Galaxy Scholar

Article & Journal Backup Source  
Budget Efficient & Focused



**ARTICLE GALAXY  
SCHOLAR**



**MISSISSIPPI STATE  
UNIVERSITY™**

University Libraries



# Article Galaxy Scholar

## Targeted and Focused Purchasing

- Allows researchers to request unavailable journals with much more focused & access granted to various university communities.

Separate Permissions For:

- Individual faculty
- Groups of students in a particular course
- Entire departments/Schools

- Processes are mediated by the library



# MSU Open Access Research Collections Budgetary Strategy

Making Better Data-informed E-Resources Budgetary Decision making  
and Materials Budget Digital Resource Allocation



# E-Resources Materials Review Strategy

Cost /Benefit Analytic Approach

Three-Pronged Synthetic Evaluation Strategy

- **Qualitative Analysis +**
- **Quantitative Analysis +**
- **Overlap Analysis =**



Goals:

- Better Budgetary Data-Informed Decision-Making
- Improved and Better Resource Allocation



**MISSISSIPPI STATE**  
UNIVERSITY™

University Libraries

# Qualitative Analysis

Emails,  
Survey Form,  
Focus Groups, &  
Individual/Group  
Meetings



**Email Subject:** The library is currently engaged in a comprehensive evaluation of our electronic resource subscriptions. To make data-informed decisions regarding subscription renewals.

We are seeking input from our teaching and research faculty on quantitative and qualitative aspects of our e-resource usage.

In this regard, we would be grateful if you could provide feedback on your use of the following Database . . . We have enclosed forms that seek your input on these databases. . .



# Qualitative Analysis Evaluation Form

Stakeholders:  
Department Heads  
Faculty  
Graduate Students

## E-Resources Evaluation Form

This is a form to evaluate Mississippi State University Libraries' current academic e-resource subscriptions. Please use this form to provide feedback on the renewal of the database **America: History and Life with Full Text**. The data and comments gathered from this form will inform future purchasing and weeding decisions for the Library's current collections and future resource wish list.

Your Current Position:

- Librarian
- Faculty
- Staff
- Other

How important is this resource for your teaching, research, and department/discipline?

- 5 – Priority – Essential
- 4 – Priority
- 3 – I would like to have, but not essential
- 2 – No Preference
- 1 – Do not purchase

Please feel free to provide comments below towards or against purchase of this resource. Comments will be used in further evaluation decisions.



# Qualitative Comments

## Comments from faculty:

"I use this database very regularly. While it includes some of the same journals as other databases, it is easier to search. It also contains journals not contained in other databases."

"I have not yet used this resource but in general I support renewing our current subscriptions and, where possible, extending the number of databases to which we subscribe."

## Stakeholders:

Department Heads  
Library Representatives  
Faculty  
Graduate Students

"This database provides access to essential journals in my field, often more rapidly than JSTOR. I'm not sure we need it and historical abstracts, but both are useful. This is a resource I direct students to use when obtaining required course readings." "This is absolutely critical for undergraduate teaching and research."

"I have not used this resource in a while; therefore, I will not strongly recommend retention unless this is a resource that my colleagues and their students use. I support access to historical journals in my field, including *War in History*, which I co-edit. If this journal is only accessible through America: History and Life with Full Text, then I would argue for retention."

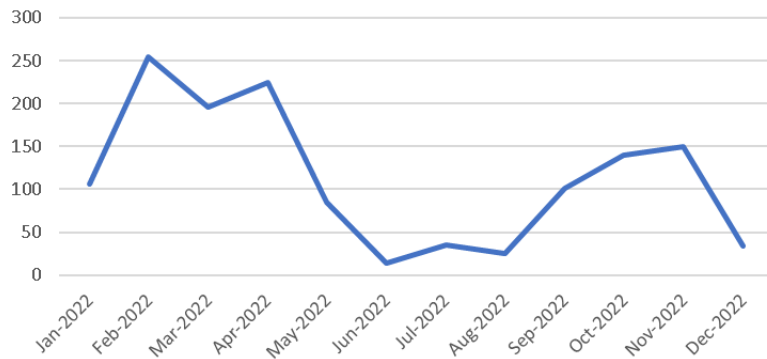


# Quantitative Analysis

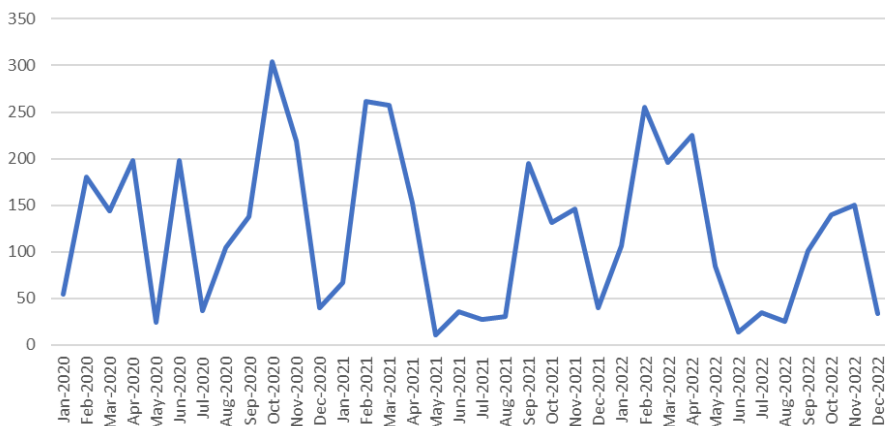
## Quantitative evaluation metrics:

- Downloads
- Searches
- Unique Site visits
- Unique site visitors
- Cost/Use

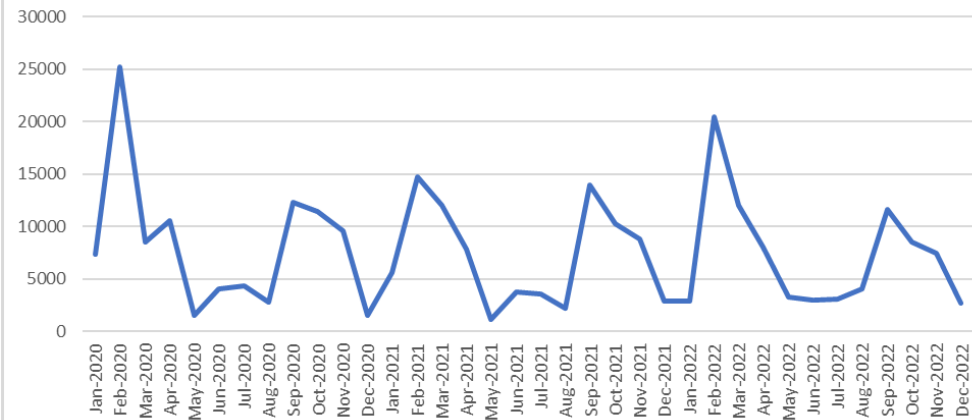
America: History and Life with Full Text Total Item Requests



America: History and Life with Full Text Total Item Requests



Academic Search Complete Total Item Requests



# Overlap Analysis Open Access Collection Analysis Report

CloudSource+ (SirsiDynix)



*Open Access Collection Analysis*

Mississippi State University Library

Consortium Subscriptions



**MISSISSIPPI STATE**  
UNIVERSITY™

University Libraries



# MSU Current Database Holdings vs. Cloudsource+ Open Access Possibilities

## Select MSU Full Text Databases and Journal Subscriptions

Overlap Analysis Shows that our paid subscriptions ranged from **19-79% overlap open access content**

## Select MSU Abstracts, Indexes and Bibliographies

# MSU Libraries Overlap Analysis

## Overlap Analysis

Journals included in subscriptions providing Full Text content.

|   |  |  |  |   |
|---|--|--|--|---|
| <b>Medline (2022)</b> <ul style="list-style-type: none"><li>• 4,964 indexed journals</li><li>• 54% OA 2017+</li></ul> | <b>Philosophers's Index</b> <ul style="list-style-type: none"><li>• 223 indexed journals</li><li>• 53% OA 2017+</li></ul>    | <b>SPORTDiscus with Full Text</b> <ul style="list-style-type: none"><li>• 278 indexed journals</li><li>• 53% OA 2017+</li></ul>              | <b>Econlit</b> <ul style="list-style-type: none"><li>• 1,302 indexed journals</li><li>• 52% OA 2017+</li></ul>                       | <b>PsychINFO</b> <ul style="list-style-type: none"><li>• 2,247 indexed journals</li><li>• 52% OA 2017+</li></ul>  |
| <b>GeoREF</b> <ul style="list-style-type: none"><li>• 4,269 indexed journals</li><li>• 51% OA 2017+</li></ul>         | <b>SocINDEX with Full Text</b> <ul style="list-style-type: none"><li>• 819 indexed journals</li><li>• 43% OA 2017+</li></ul> | <b>Communication &amp; Mass Media Complete</b> <ul style="list-style-type: none"><li>• 218 indexed journals</li><li>• 42% OA 2017+</li></ul> | <b>Art &amp; Architecture Complete</b> <ul style="list-style-type: none"><li>• 141 indexed journals</li><li>• 33% OA 2017+</li></ul> | <b>PsycARTICLES</b> <ul style="list-style-type: none"><li>• 106 indexed journals</li><li>• 28% OA 2017+</li></ul> |

Journals included in subscriptions providing Abstract / Index records only.  
(identified OA content is available in CloudSource in Full Text)

|   |   |   |  |  |
|---|---|---|--|--|
| <b>MLA International Bibliography</b> <ul style="list-style-type: none"><li>• 6,195 indexed journals</li><li>• 48% OA 2017+</li></ul> | <b>Public Affairs Index</b> <ul style="list-style-type: none"><li>• 1,758 indexed journals</li><li>• 36% OA 2017+</li></ul> | <b>Historical Abstracts</b> <ul style="list-style-type: none"><li>• 1,327 indexed journals</li><li>• 33% OA 2017+</li></ul> | <b>America: History &amp; Life</b> <ul style="list-style-type: none"><li>• 937 indexed journals</li><li>• 29% OA 2017+</li></ul> | <b>Music Index</b> <ul style="list-style-type: none"><li>• 178 indexed journals</li><li>• 29% OA 2017+</li></ul> |
|---|---|---|--|--|



# Cloudsource+

## Overlap Analysis and Metrics

| Database   | CloudSource+ Open Access Coverage |
|--|-----------------------------------|
| Academic Search Complete                             | 69%                               |
| CAB Abstracts 1990-present                           | 75%                               |
| Communication & Mass Media Complete                  | 42%                               |
| EconLit  | 52%                               |
| EconLit with Full Text                               | 51%                               |
| GeoRef   | 51%                               |
| Historical Abstracts                                 | 33%                               |
| Historical Abstracts with Full Text                  | 41%                               |
| Library and Information Science Source               | 72%                               |
| Linguistics & Language Behavior Abstracts (ProQuest) | 66%                               |
| MedLine  | 54%                               |
| MLA International Bibliography                       | 48%                               |
| Music Index  | 29%                               |
| Philosopher's Index                                  | 53%                               |
| Public Affairs Index                                 | 36%                               |
| SocIndex with Full Text                              | 43%                               |
| SportDiscus with Full Text                           | 53%                               |
| Wildlife and Ecology Studies Worldwide               | 51%                               |
| <b>Average % of coverage</b>                         | <b>48.04%</b>                     |

Select  
MSU Databases  
Reviewed between  
February –  
May 2023

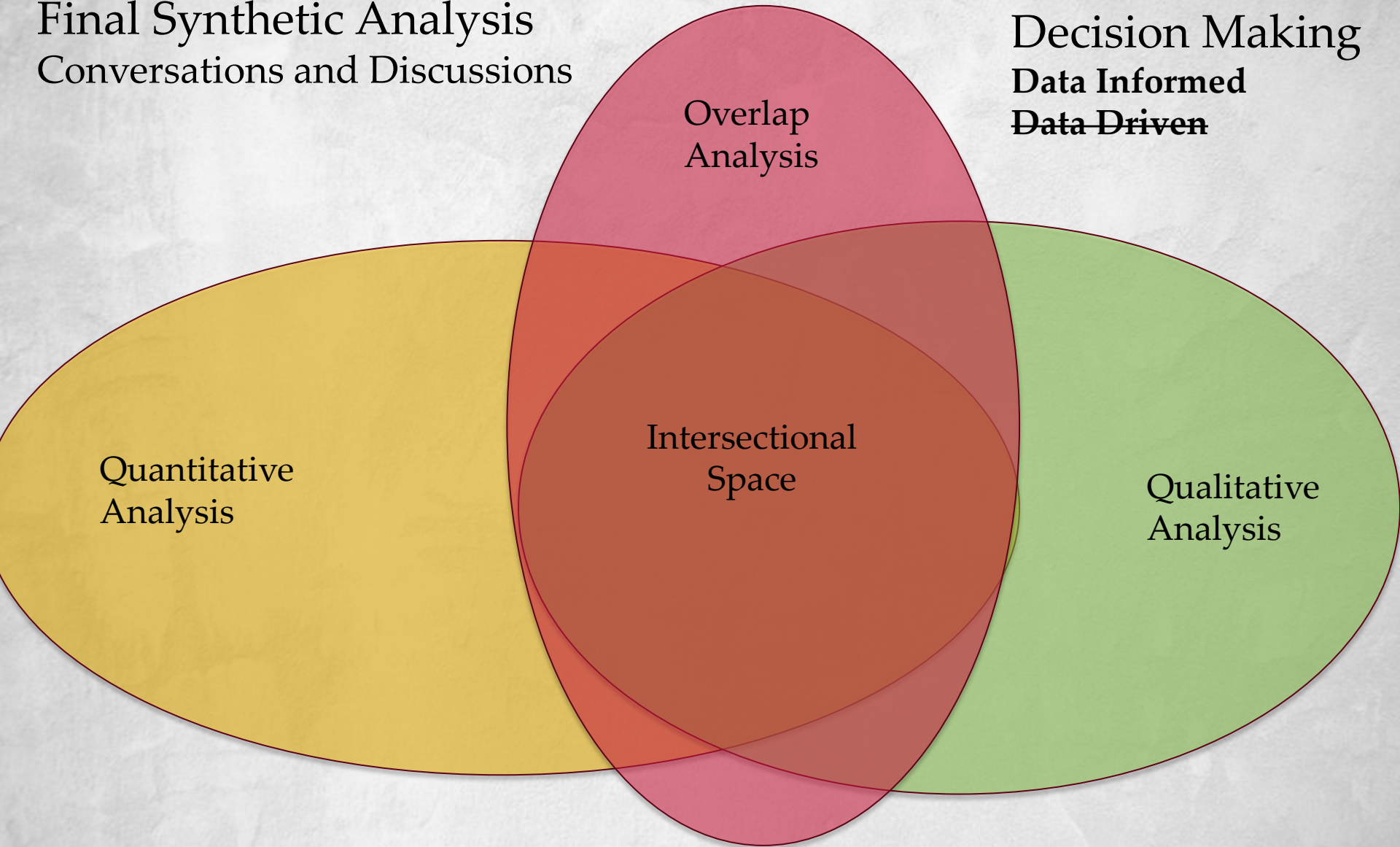
Wide Range of  
Database Overlap for  
**Full Text journal  
open access  
article** Coverage  
aggregated in  
CloudSource+

Mediated coverage  
available through  
Article Galaxy  
Scholar



Final Synthetic Analysis  
Conversations and Discussions

Decision Making  
Data Informed  
~~Data Driven~~



| Analytic Measures             | E-Resources Database 1 | E-Resources Database 2 | E-Resources Database 3     |
|-------------------------------|------------------------|------------------------|----------------------------|
| Qualitative Analysis          | N (Not Needed)         | Y (Needed)             | S (Split/Mixed)            |
| Quantitative Analysis (Usage) | L (Low Usage)          | H (High Usage)         | S (Split/Mixed)            |
| Open Access Overlap Analysis  | H (Overlap >60%)       | L (Overlap <40%)       | Mixed (40-60%)             |
| Cost                          | High                   | Low                    | Medium                     |
| Recommendation Decision       | Drop                   | Keep                   | Further Discussions Needed |



# MSU E-Resources Budget Strategy Project

## Preliminary Findings

### Better

E-Resources Budget Decisions &  
E-Resources Digital Resource Allocation

Can Be Achieved through:



**ARTICLE GALAXY  
SCHOLAR**

Synthetic Methodologies  
Cost/Benefit Analysis  
Data-Informed Decision-Making  
Affordances of New Technology



**MISSISSIPPI STATE**  
UNIVERSITY™

University Libraries

# Summary Conclusions

## E-Resources Budget Evaluation

- Significant Cost savings for library budgets can be achieved through new possibilities of leveraging open access and document delivery while maintaining access to scholarly journals and resources
- Savings from CloudSource+ Open Access Resources can fund more intentionally aligned possibilities through Article Galaxy Scholar
- Project Continuing 2023-2025 Fiscal Years



# Thank you!

## Questions?

Contact:

**Ray Uzwyshyn, Ph.D. MBA MLIS**

Associate Dean, Collections Management and Strategy

Mississippi State University Libraries

[ruzwyshyn@library.msstate.edu](mailto:ruzwyshyn@library.msstate.edu), 512-521-6893



**MISSISSIPPI STATE**  
UNIVERSITY™

University Libraries

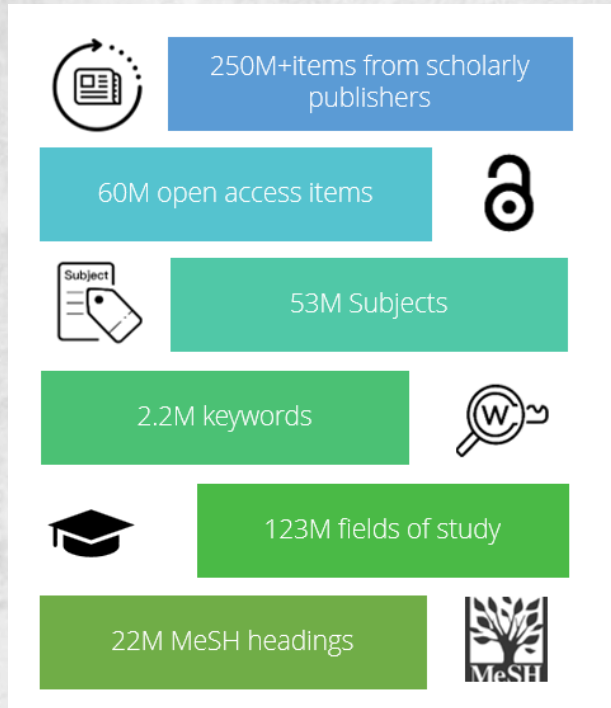


**MISSISSIPPI STATE**  
UNIVERSITY™

University Libraries



# MSU Open Access Research Collections Budgetary Strategy



**Quantitative, Qualitative Data collection and overlap analysis** as metrics to aid in better data-informed Budgetary decision making



**ARTICLE GALAXY  
SCHOLAR**

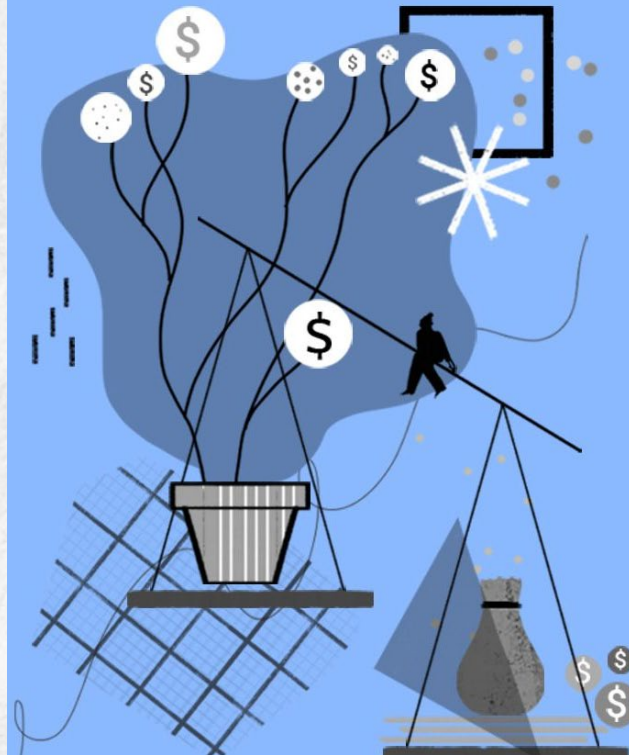


**MISSISSIPPI STATE  
UNIVERSITY™**

University Libraries

# MSU E-Resources Materials Budget

Methodologies  
Strategies  
And Goals



# Cost-Benefit Analysis

*[kós(t)-'be-nə-,fit ə-'nɑ-lə-səs]*

A systematic process of evaluating the desirability of a decision by weighing its potential benefits and costs.



MISSISSIPPI STATE  
UNIVERSITY™

University Libraries

# MSU E-Resources Budget Strategy Project

## Summary Conclusions



### Making Better

E-Resources Budget Decisions &  
E-Resources Digital Resource Allocation


Can Be Achieved through:

Synthetic Methodology

Cost/Benefit Analysis


Data-Informed Decision-Making

Affordances of New Technology



**Cost-Benefit Analysis**  
*[kɒs(t)-'be-nə-,fit ə-'nɑ-lə-səs]*

A systematic process of evaluating the desirability of a decision by weighing its potential benefits and costs.



**Data-Informed Decision-Making**



# Qualitative Analysis: Evaluation Form

Stakeholders:  
Department Heads  
Faculty  
Graduate Students

The library is in the process of negotiating open access to various journals, and this information will be useful for these types of negotiations. Have you or MSU published in journals included in this resource, or do you plan to submit or publish here in the future?

- Yes
- No
- Comments

How many times have you used or referenced this resource in the past year for research or classes?

- 0
- 1-5 times
- 5-10 times
- More than 10 times
- Comments

Would you like to be contacted further with regards to evaluation of this resource? If you would like to be contacted, please provide your name, email address, and phone number below.

Name: \_\_\_\_\_

Email: \_\_\_\_\_

Phone: \_\_\_\_\_





Contents

*Executive Summary* ..... 2

*Overlap Analysis* ..... 3

*Methodology* ..... 4

*CloudSource content* ..... 5

*CloudSource OA components* ..... 7

*Support for OER* ..... 7

*Feedback from students* ..... 8

*CloudSource+* ..... 8

*BLUEcloud Course Lists* ..... 9

*CloudSource benefits breakdown* ..... 10

*Summary and recommendations* ..... 10

